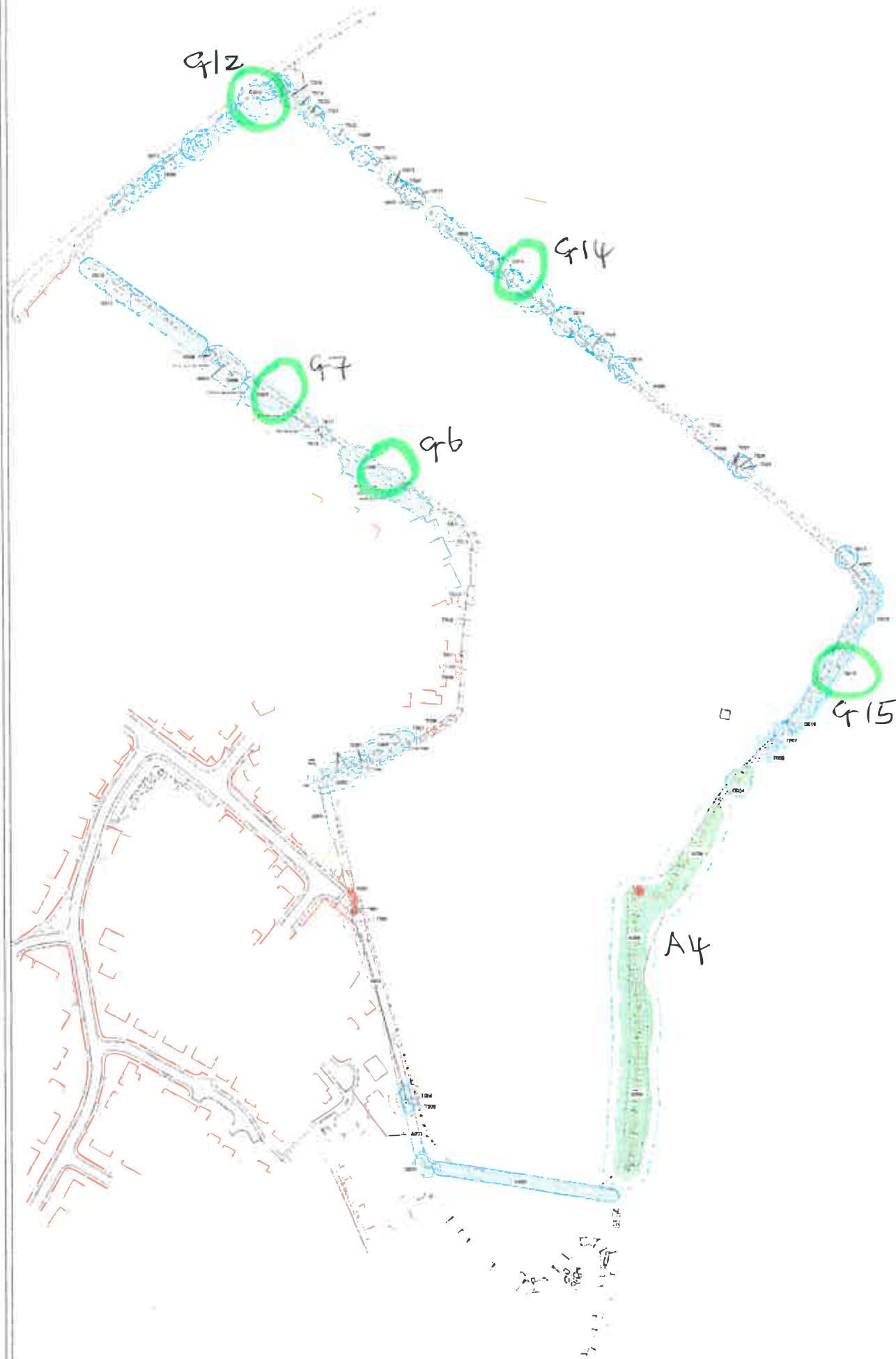
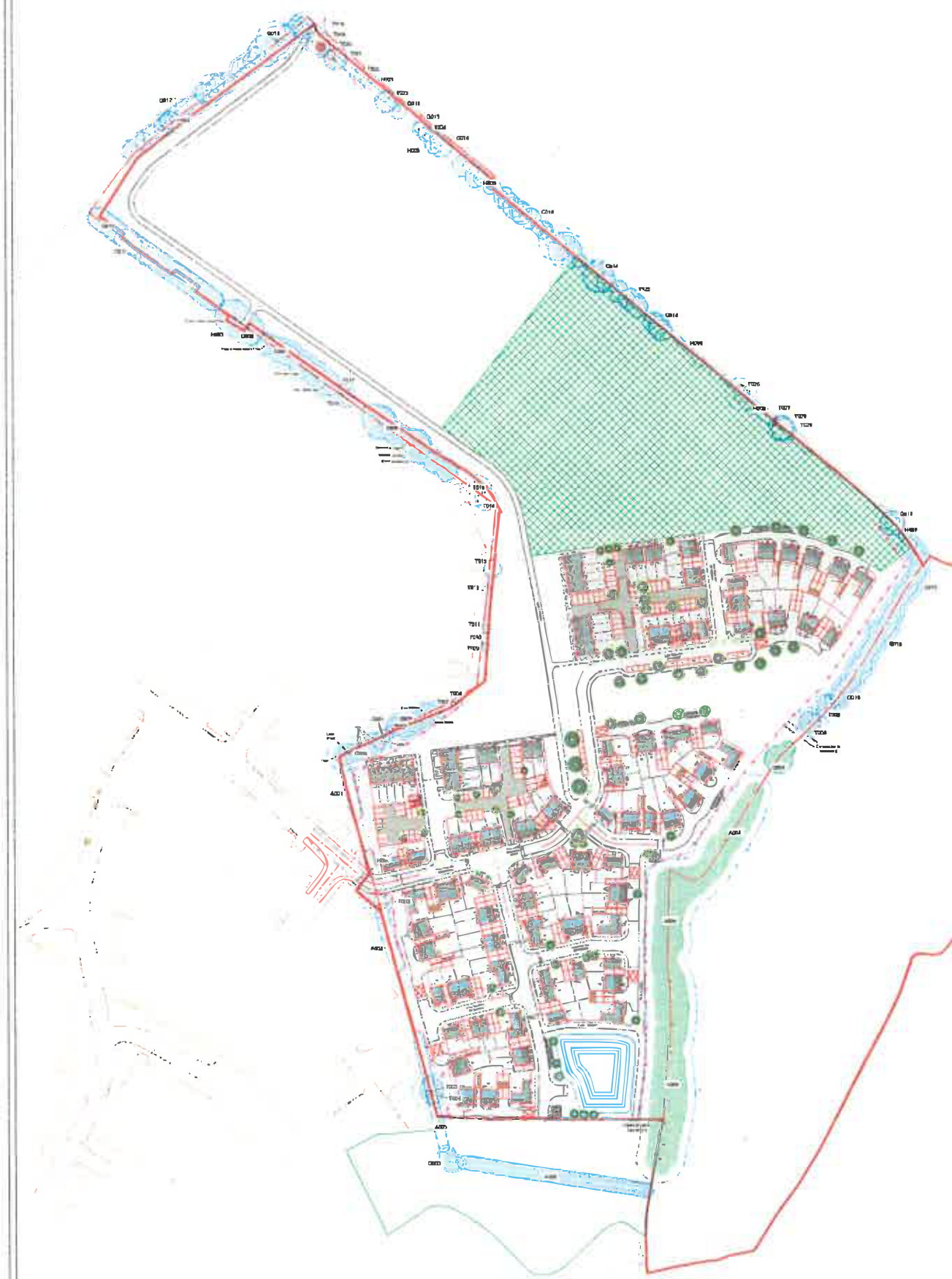


Existing Site Plan



Proposed Site Plan



CATEGORY AND DEFINITION	
Trees to be retained for retention	
Category U	Trees in a main corridor that they cannot reasonably be removed as being trees in the same level use for longer than 10 years
Trees to be removed for retention	
Category A	Trees of high quality with an estimated remaining life expectancy of at least 15 years
Category B	Trees of moderate quality with an estimated remaining life expectancy of at least 20 years
Category C	Trees of low quality with an estimated remaining life expectancy of at least 10 years, or young trees with a stem diameter under 100mm

ID.9



NOTE:

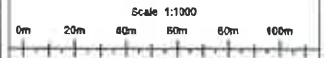
Hayden's Arboricultural Consultants were provided with a Topographical Survey but these do not always show the positions of all the trees/features on site. The locations of any additional features have been fixed using GPS. As such the position of the trees/features features should not be taken as exact but give a fair distribution of their locations on site.

LEGEND

- Existing Tree/Hedge BS 5837:2012 Category A
- Existing Tree/Hedge BS 5837:2012 Category B
- Existing Tree/Hedge BS 5837:2012 Category C
- Existing Tree/Hedge to be removed to allow for development BS 5837:2012 Category C
- Existing Tree/Hedge BS 5837:2012 Category U
- Existing Tree/Hedge to be Removed BS 5837:2012 Category U
- Line of Root Protection Area (RPA) - calculated following guidelines set in BS 5837:2012
- Additional features which do not meet BS 5837:2012 categorisation but is included for reference
- Dead or Dying Tree
- Line of proposed temporary protective barrier
- Line of proposed Root Pruning

16.03.21 NT Based on Topographical Information and L100 Survey Data. Layout shown is subject to change.

The position, condition, and dimensions of the trees are based on a site survey undertaken on 17/07/2020
The original of this drawing was produced in colour - a monochrome copy should not be relied upon



5 Moseley Farm Business Centre
Farnham AB Salmons,
Bury St Edmunds
Suffolk IP29 6JY
www.basurveys.co.uk
Head Office: 01286 136391
Southern Office: 01723 821422
Email: info@basurveys.co.uk

Taylor Wimpey East London	Proj#m AJA
Land off Richard Avenue Wivenhoe, Essex	
16.03.21	NT
1:1000 (A0)	AT
	8240-O-AIA